

## Challenge

### Issue

Ball mill chutes made from carbon steel required annual replacement.

### Goal

Eliminate the yearly replacement requirements

### Root Cause

Highly abrasive dry limestone erodes the carbon steel.

## Solution

### Preparation

- Pressure wash and decontaminate surfaces
- Grit blast to Sa 2.5 with 3 mil (75 µm) angular profile

### Application

1. Apply “high build” **ARC MX1** at 6-10 mm (234-390 mils) to most critical and high wear areas of the limestone chutes and blades

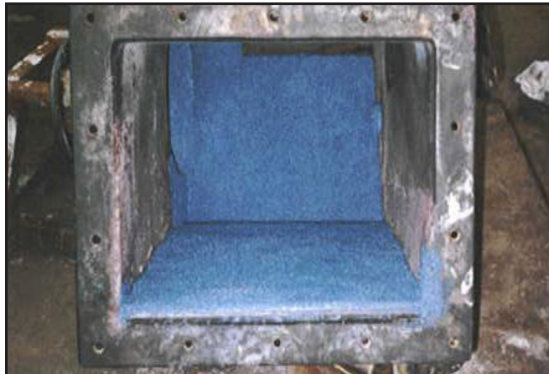
## Results

### Equipment Savings

The use of **ARC MX1** has eliminated the requirement to purchase 6 new chutes annually. Minor touch-up to the **ARC MX1** is performed once per year.

### Savings

Using ARC products to rebuild chutes and other equipment reduced annual plant operating costs by: **\$32.5K**

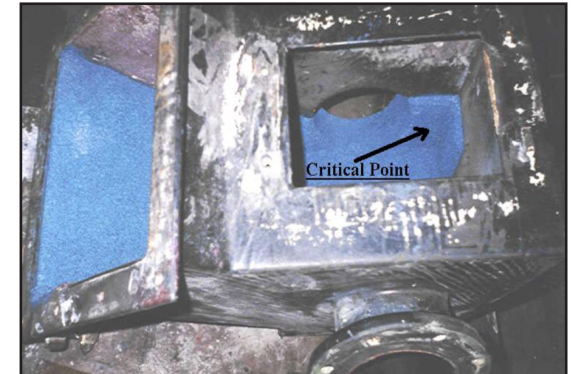


FGD unit ball mill limestone chute with ARC MX1 lining applied to high wear areas



New chutes and mixer blades lined and coated with ARC MX1

\$=USD



Top view of ARC MX1 liner in limestone chute illustrating high wear area